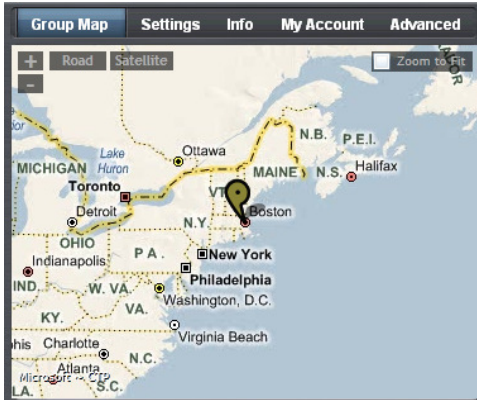


## New Features for SDI and Dispatch

### Group Map Feature

The Group Map feature allows viewing the locations of the incoming streams. The map will automatically position itself based on all incoming streams. Clicking on the Zoom to Fit checkbox will zoom to a view that shows all live streams.



The preview video windows are color coded, and the markers on the map correspond to the preview window color. The stream that is selected (green border around video) has a map marker that is opaque. The other live streams are shown as semi-transparent markers. Zoom, map dragging, and Road/Satellite views follow standard mapping operation.

This feature is useful in tracking where the video is originating from.

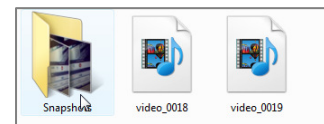
### Snapshot Feature

The Snapshot feature allows you to take snapshots of the transmitting video any time during a live stream. There are no limits to the number of snapshots you can take. Snapshots are stored locally.

When you start transmitting a video stream, the Snapshot icon turns from grey to blue. Simply click on the icon every time you wish to take a snapshot.



To view the snapshots, go to the My Account tab and select the Locally Saved Video link. You will see any locally saved video as well as a Snapshots folder, where snapshots are stored.



The snapshots file name contains reference to the video where the snapshot was taken.

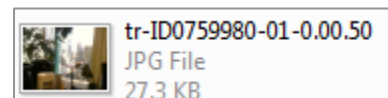
The example of snapshot tr-ID0759980-01-0.00.50.jpg shows:

Username: tr

Unique video ID: 0759980

Snapshot number: 01 (the first snapshot taken of above video)

Relative time of snapshot: 0.00.50 (0 hours, 00 minutes, 50 seconds into the video)

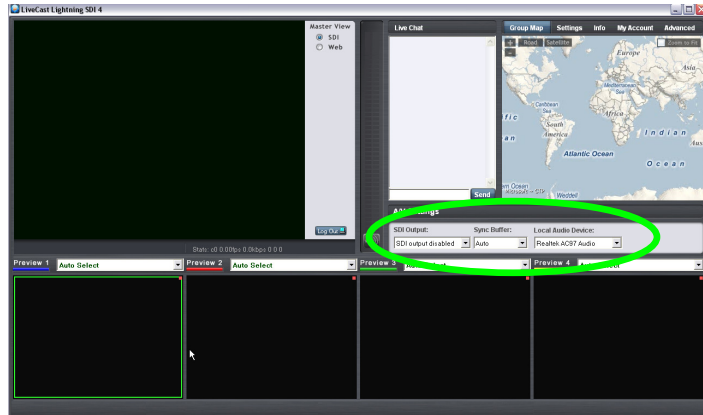


This feature is useful when wanting to bookmark a place in the video to view later.

## Buffer Control Feature

The Buffer Control feature is located beside the SDI Output selector in the A/V Settings area. This control allows setting the sync buffer to a pre-determined time. This will increase the latency by the same amount.

Change the buffer by using the pulldown selector. The sync buffer can be changed at anytime and affects all incoming streams.



## When to Use the Buffer Control

The Buffer Control was designed to assist in situations where the network congestion fluctuates and connectivity is not stable (e.g. if the transmitting stream is usually around 160 kbps, but has dips down to 40 kbps). Increasing the buffer time will give the video data more time to pass through the constricted connection, resulting in a better quality stream, but with increased latency. If you experience data packet dropouts (audio will have artifacts), then increasing the buffer will compensate for this.

Buffer Control is ideal when audio/video quality is more important than low latency and there is a single stream.

Please note, increasing the buffer also increases the latency of switching streams, and is not recommended for scenarios when switching back and forth between various incoming streams is required.

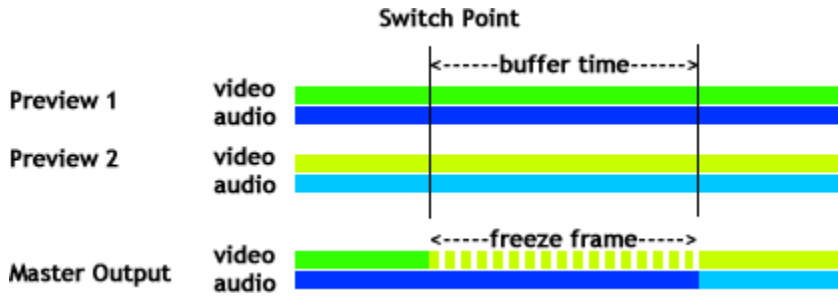
## When Not to Use the Buffer Control

The Buffer Control is not designed as a substitute for bit rate control (e.g. if the available bandwidth on the transmitting stream is consistently lower than the selected bit rate), however if the transmitting stream encounters a drop in connectivity and you do not want to stop the stream, increasing the buffer on-the-fly may save the stream.

Using the Buffer Control is not recommended when switching back and forth between various incoming streams is required, due to the increased latency in switching streams.

## Switching With Increased Buffer

If you are stuck, and need to do switching with an increased buffer, the audio will switch over at the end of the buffer period, but the video will instantly switch to a freeze frame of the new stream until the buffer time ends, and then continue as expected. The diagram below details this procedure when switching from Preview 1 to Preview 2.



e.g. If the buffer is set to 3 seconds, there will be a freeze frame of the incoming video for 3 seconds, then the new audio and video take over.

Copyright © 2009 LCM Livecast Media, Inc

[support@livecast.com](mailto:support@livecast.com)  
tel: 604 844-2263 ext.4#

Copyright © 2009 LCM Livecast Media, Inc